



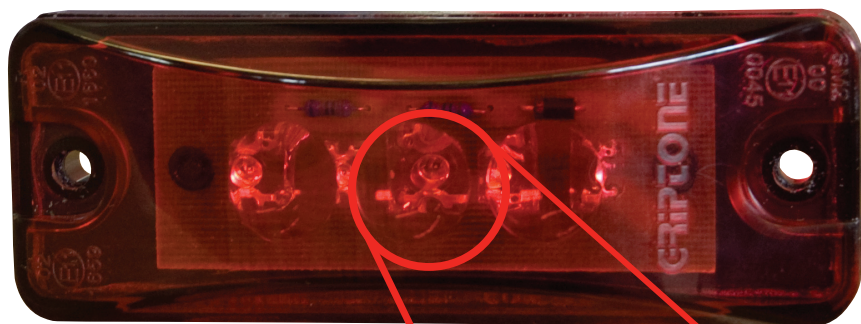
“the right
connection for
starting power...”

GRIP TONE[®]
the automotive **electrical** component specialist
part of the Griptone Group of companies

Unit A, Link 580, 188 Moorside Road
Swinton, Manchester, M27 9LB
Tel: 0161 727 9011
Fax: 0161 727 9021
www.griptone.co.uk

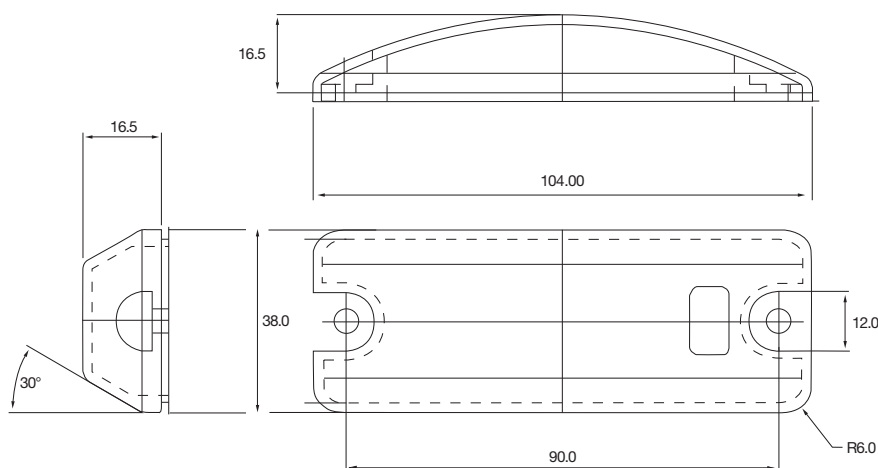
LED

'outline marker lights'



- Low voltage LED
- Optional flashing feature
- Slimline, easy fit

dimensions



variants

- 3 LED (front) in White part no. 2000 LW
- 5 LED (rear) in Red part no. 2000 LR
- 3 LED (side) in Amber part no. 2000 LA

technical information

SUPPLY	POWER
12.0V / 24.0V	0.47W / 0.66W
VOLTAGE	CONSUMPTION
14.5V / 28.0V	0.66W / 0.95W

GRIPSTONE[®]
the automotive **electrical** component specialist

part of the Griptone Group of companies

The Griptone group of companies offer comprehensive manufacturing capabilities with over twenty five years of experience. From design and manufacture of the Battery Booster System to LED lighting for the transport industry our in-house capabilities include; metal treatment of hard chrome, electroless nickel, zinc and electro copper depositing, precision grinding, injection moulding and vacuum forming.

Griptone offer their customers the complete manufacturing solution.

product

The latest in LED technology and functionality has been developed to produce a series of LED Outline Marker Lights. Designed and manufactured in conjunction with the new and aftermarket industry in mind to ensure we meet the highest standard of customer expectation, whilst bringing to the market a product which will dramatically reduce consumption, ongoing product replacement and maintenance cost.

design features

- offer a minimum of 7 years life - drastically reducing maintenance costs
- current consumption a fraction of a tungsten filament lamp
- can be vertically or horizontally mounted - and cannot be fitted incorrectly
- covered by a standard 3 year warranty
- completely watertight
- reverse polarity protection
- suitable for use on nominal 24V or 12V supply
- manufactured in ABS (base) and acrylic (lens)
- cable entry is potted
- designed for Retrofit 90mm between fixing points as standard fitment